



Thought Leadership Article

Migrate from Legacy to Modern BI

Faster, Cheaper, Better

with MigratorIQ

Author
Lalit Bakshi

Co-Founder & President,
USEReady



Read Now

marketing@useready.com

It may sound like an exaggeration but retiring a legacy BI system for a modern one is like swapping a horse-drawn carriage with a Tesla. The differences are really that stark. Modern BI gives you speed, agility, and better insights by miles. But the journey to modern BI is fraught with challenges. Get it wrong and it could get really expensive and time-consuming. And could lead to costly downtime.





“

In today's business, legacy BI is a ticking time bomb. Modern BI isn't just about being faster—it's the difference between leading the market and becoming irrelevant. Smart migration to cutting-edge analytics doesn't just crunch numbers; it uncovers opportunities, predicts risks, and turns data into dollars. It's not about keeping up; it's about staying in business.

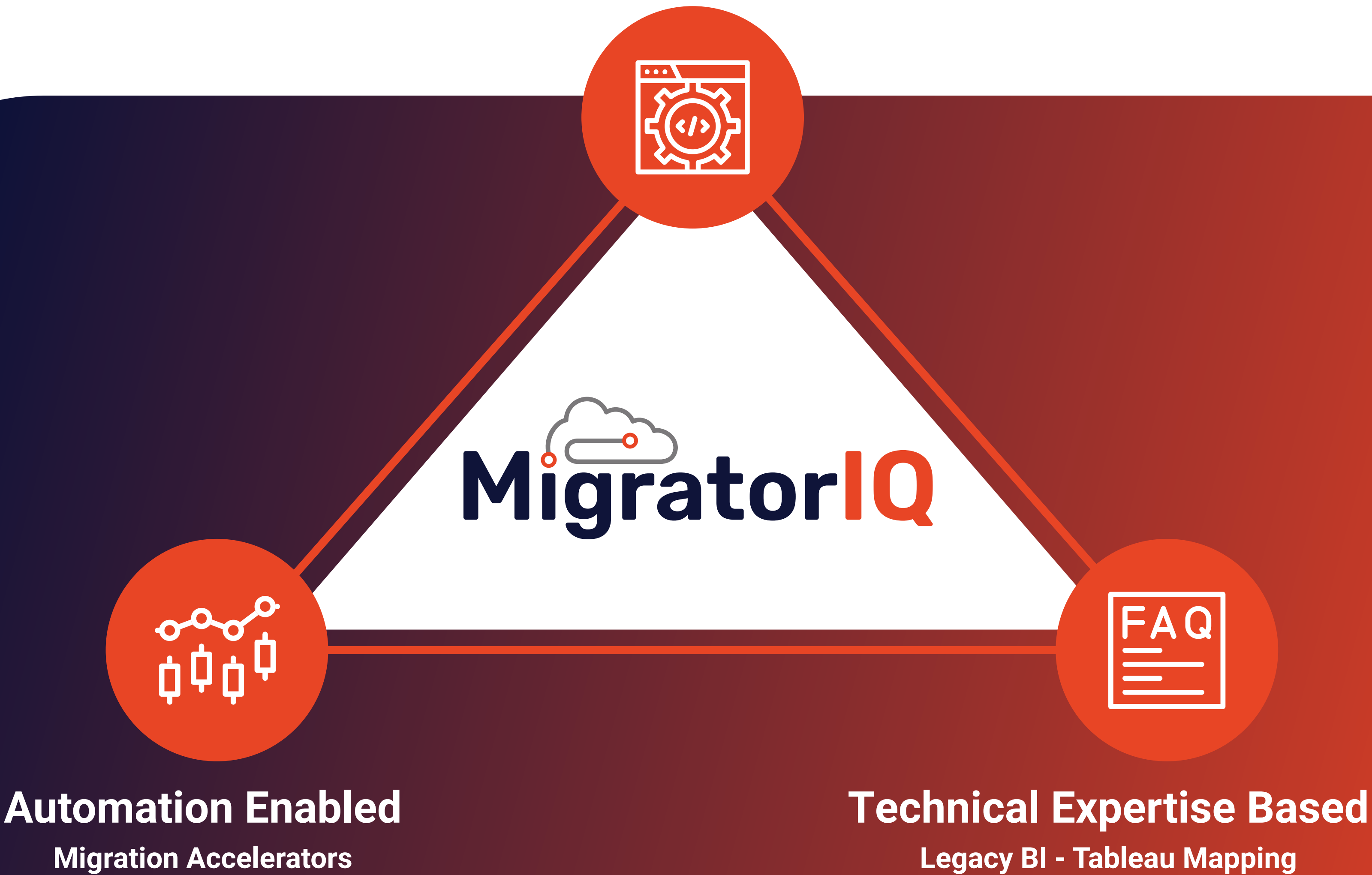
”

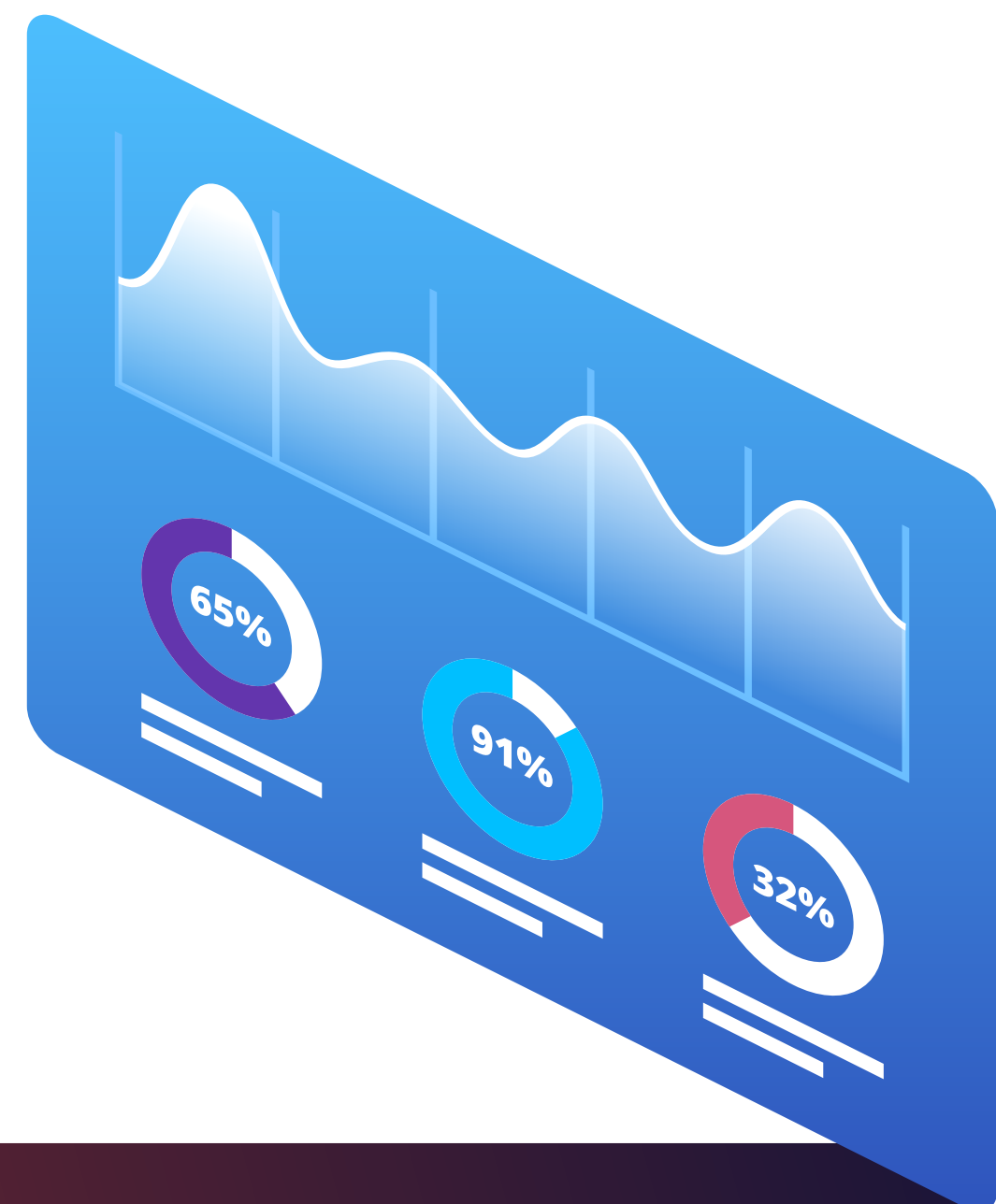
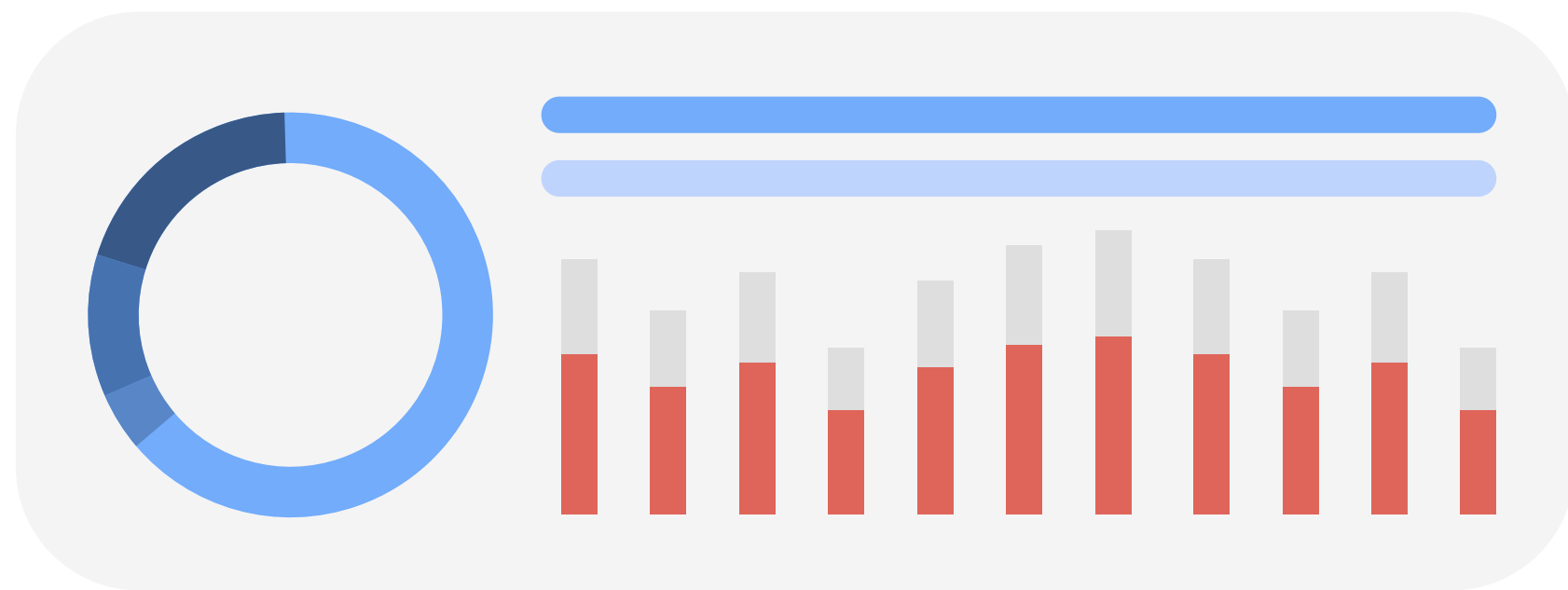
**David Palmieri**

Business Transformation Leader | Ex-Experian |
Ex-BNY Mellon | Ex-Citi | Ex-Bank of America

Enter MigratorIQ, an accelerator-based, framework-guided legacy migration program that can turn this potentially bumpy ride into a smooth journey to BI success. By delivering a faster, cheaper, and better migration process, MigratorIQ empowers organizations to unlock the full potential of their data and gain a competitive edge.

Framework Guided
Plan → Migrate → Validate





“

In banking and financial services, we're always racing against time, risk, and cost. The holy grail is finding partners who can consistently deliver faster, better, and cheaper—especially in critical areas like BI migration. It's rare to find all three, but when you do, it's not just a competitive edge; it's a game-changer.

”



Bob Rosetta

Member, USEasy Advisory Board |
Ex-Citi | Ex-JPMorgan Chase

Faster: Accelerate Your Time to Value

Time is of the essence in today's fast-paced business environment. Legacy BI migrations can be time-consuming, often involving complex data mapping, transformation, and validation processes. These manual tasks not only consume valuable resources but also increase the risk of errors and delays. MigratorIQ leverages purpose-built accelerators and adapters to automate many of these labor-intensive steps. Our intelligent automation engine rapidly analyzes and understands legacy data structures, metadata, and reports, enabling us to create accurate and efficient migration plans. By streamlining the migration process, MigratorIQ significantly reduces project timelines and accelerates your time to value from your new BI platform.



Automated Metadata Mapping

Our automated metadata mapping capabilities accelerate the discovery and mapping of data elements between legacy and target systems, reducing manual effort and improving accuracy.



Intelligent Data Transformation

MigratorIQ's data transformation engine automatically handles complex data conversions, ensuring data consistency and integrity throughout the migration process.

Cheaper: Optimize Your Migration Investment

Legacy BI migrations can be costly, involving significant investments in software, hardware, consulting services, and personnel. These expenses, combined with the potential for project overruns, can strain IT budgets. MigratorIQ offers a cost-effective solution by optimizing the migration process and reducing overall project expenses. Our pay-as-you-go pricing model eliminates the need for upfront capital expenditures, making it easier for organizations to budget for the migration. Additionally, by accelerating the migration process and minimizing the risk of errors, MigratorIQ helps to avoid costly rework and delays.



Pay-as-You-Go Pricing

Our flexible pricing model aligns costs with project progress, allowing organizations to manage their budget effectively.



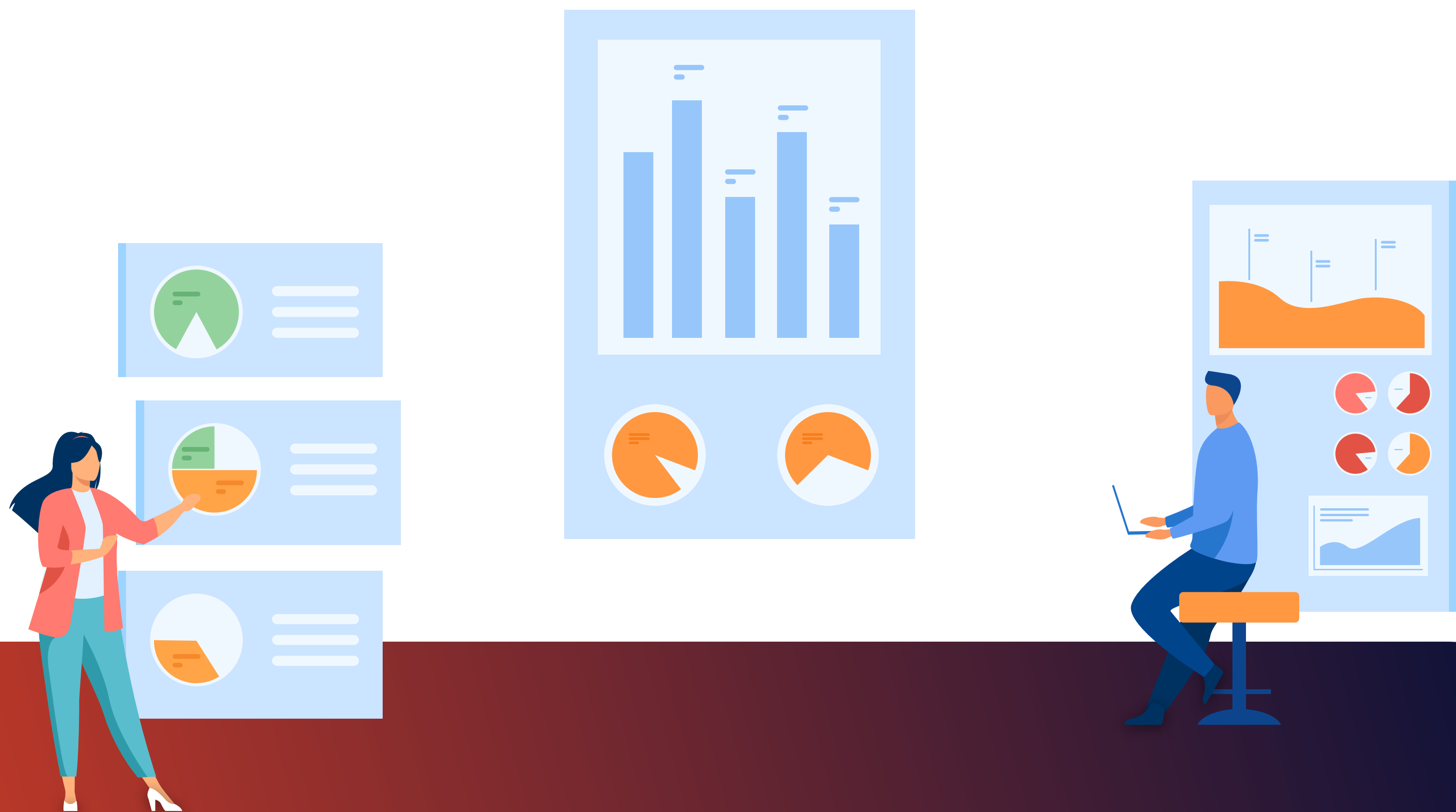
Reduced Resource Requirements

By automating many of the manual tasks involved in migration, MigratorIQ frees up valuable IT resources, reducing labor costs.



Risk Mitigation

Our robust testing and validation capabilities help to identify and address potential issues early in the process, preventing costly errors and delays.



“ In our experience we’ve found that legacy BI migration upfront costs can sometime become a significant barrier to BI modernization. MigratorIQ's approach addresses not just the upfront expenses, but the hidden costs of extended timelines and resource drain. Its pay-as-you-go model is a game-changer for organizations looking to manage cash flow during large-scale transitions. ”



Reid C. Bentley
Vice President - Strategic Banking
at Salesforce

Better: Improve Data Quality and User Experience

A successful BI migration is not just about moving data from one system to another; it's about improving data quality and enhancing the user experience. MigratorIQ is designed to deliver on both fronts.



Enhanced Data Quality

Our data cleansing and profiling capabilities help to identify and correct data inconsistencies, ensuring that the data migrated to the new BI platform is accurate and reliable.



Improved User Experience

BI migration programs powered by MigratorIQ cover the formatted reporting requirement aspect as well. With Pixel Perfect, our enterprise reporting tool, users can preserve/replicate legacy report formats and user experience even after moving to modern BI. In essence, migration to a new BI platform doesn't mean reporting disruption for end-users.



Foundation for Modern BI

By accelerating the migration process and improving data quality, MigratorIQ sets the stage for organizations to fully leverage the capabilities of modern BI platforms, such as self-service analytics, advanced visualization, and predictive modeling.



Conclusion

MigratorIQ is more than just a migration tool; it's a strategic partner in your journey to modern BI. By combining speed, cost-efficiency, and data quality, it empowers organizations to overcome the challenges of legacy BI.

Are you ready to accelerate your BI modernization journey? **Contact us** today to learn more about how MigratorIQ can help you achieve faster, cheaper, and better results.